

# POLO HOUSE AT PALM BEACH POLO & COUNTRY CLUB POA INC.

A PARCEL OF LAND LYING IN A PORTION OF SECTION 14, TOWNSHIP 44 SOUTH, RANGE 41 EAST, THE VILLAGE OF WELLINGTON, PALM BEACH COUNTY, FLORIDA  
SHEET 2 OF 2

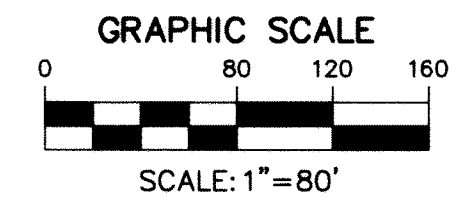
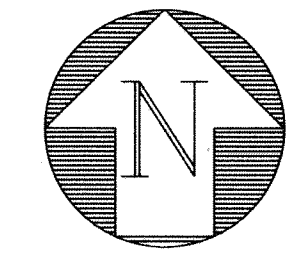
STATE OF FLORIDA  
COUNTY OF PALM BEACH

THIS PLAT WAS FILED FOR  
RECORD AT \_\_\_\_\_

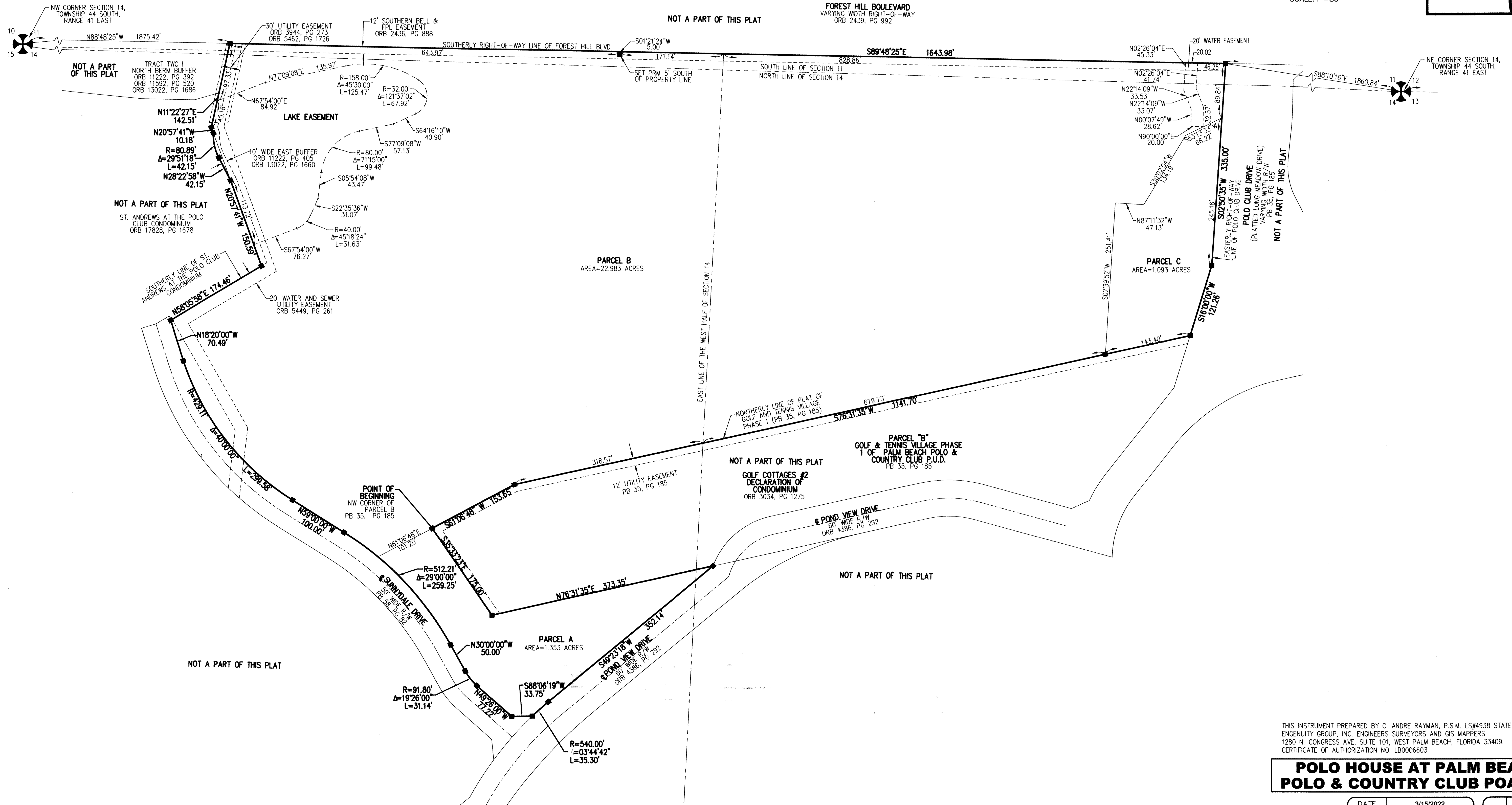
THIS \_\_\_\_\_ DAY OF \_\_\_\_\_  
AND DULY RECORDED  
IN PLAT BOOK NO. \_\_\_\_\_  
ON PAGE(S) \_\_\_\_\_

JOSEPH ABRUZZO,  
CLERK AND CIRCUIT COURT &  
COMPTROLLER

BY: \_\_\_\_\_  
DEPUTY CLERK



4



THIS INSTRUMENT PREPARED BY C. ANDRE RAYMAN, P.S.M. LS#4938 STATE OF FLORIDA.  
ENGINEUTY GROUP, INC. ENGINEERS SURVEYORS AND GIS MAPPERS  
1280 N. CONGRESS AVE., SUITE 101, WEST PALM BEACH, FLORIDA 33409.  
CERTIFICATE OF AUTHORIZATION NO. LB0006603

## POLO HOUSE AT PALM BEACH POLO & COUNTRY CLUB POA INC.

A Higher Standard of Excellence  
**engineuty** group inc.  
ENGINEERS - SURVEYORS - GIS MAPPERS

1280 N. CONGRESS AVENUE, SUITE 101,  
WEST PALM BEACH, FLORIDA 33409  
PH (561)655-1151 • FAX (561)832-9390  
WWW.ENGEUTYGROUP.COM

DATE	3/15/2022
SCALE	1"=80'
CAD FILE	20223.01
DSX PROJECT	20223.01
DRAWN	JCM
CHECKED	CAR

S  
H  
E  
E  
T  
**2/2**  
JOB NO.  
**20223.01**